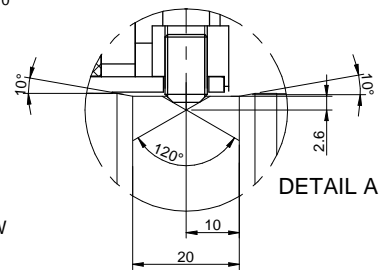
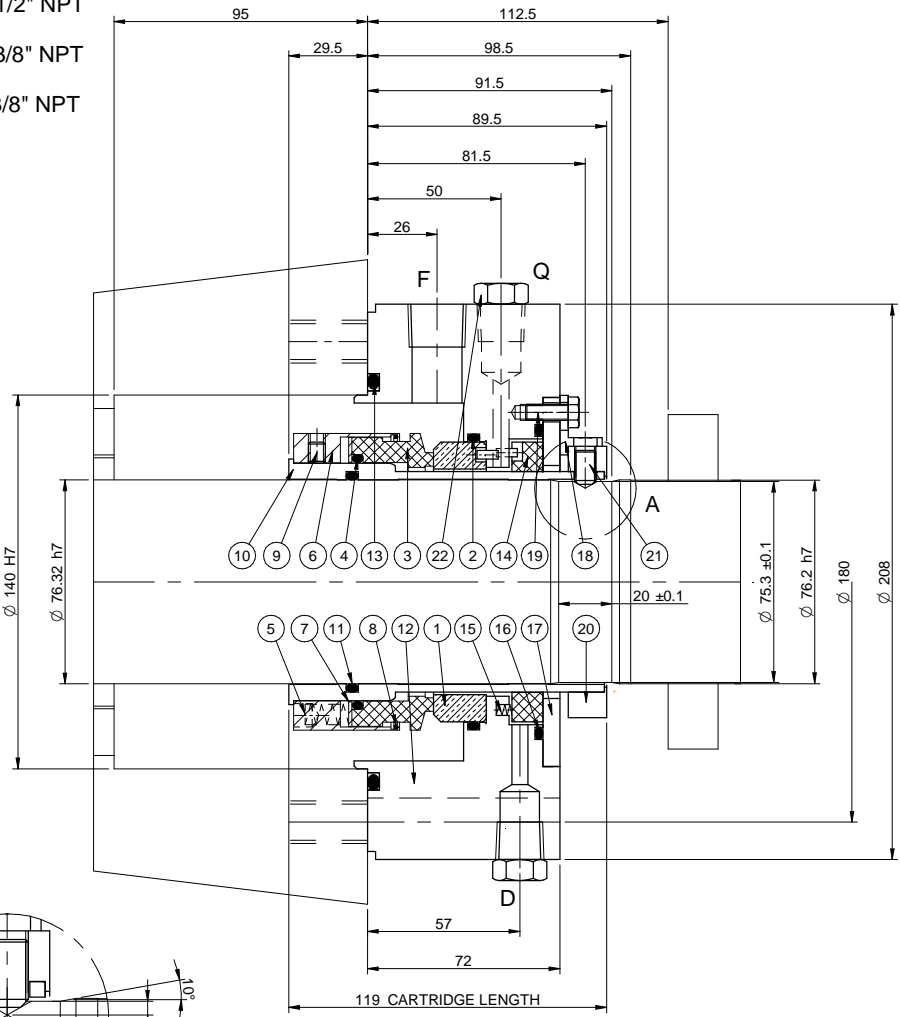
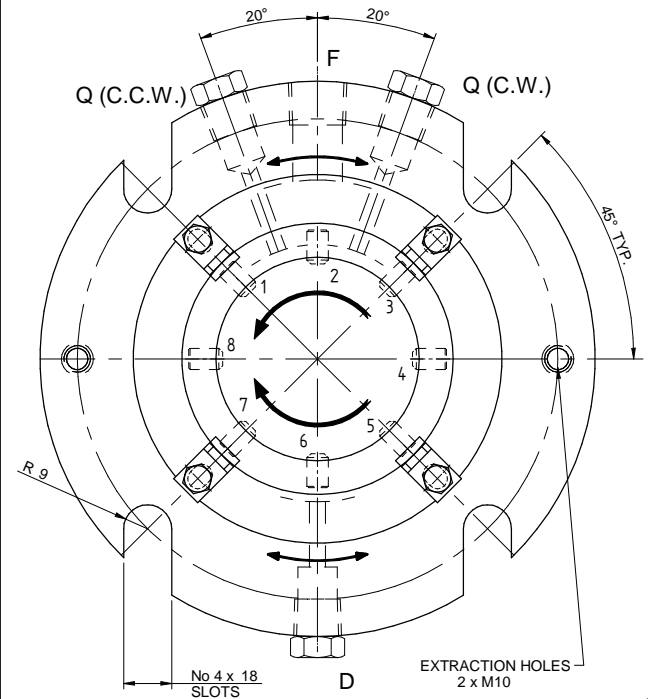


F - FLUSH (Filtered and cooled lean solution Q = 7 l/min) - Ø 1/2" NPT

Q - QUENCH (PLUGGED) - Ø 3/8" NPT

D - DRAIN (PLUGGED) - Ø 3/8" NPT



Pump MAWP: 4.55 Mpa g @ 115°C
Seal STATIC PRESSURE RATING : 5 Mpa g
Seal DYNAMIC PRESSURE RATING : 2.1 Mpa g
Seal Power Absorption in Pump Normal Operation : 1160 W

NOTES:

- REMOVE SHARP EDGES TO AVOID DAMAGE TO GASKETS
- TIGHTEN EVENLY THE SET SCREWS REF. 21 (RECOMMENDED TIGHTENING TORQUE 17.5 N m)
- RECOMMENDED SEQUENCE: 1-5-3-7-2-6-8-4
- SEQUENCE TO BE REPEATED UNTIL ALL GRUBSCREWS ARE TIGHTENED TO THE RECOMMENDED TORQUE
- THE SPACERS REF. 18 ARE USED ONLY TO PRESET THE CORRECT OPERATING LENGTH OF THE SEAL, THEY MUST BE DISENGAGED AFTER COMPLETING THE INSTALLATION AND BEFORE STARTING THE EQUIPMENT.
- LUBRICATE THE SHAFT USING SOFT HAND SOAP / WATER SOLUTION, GLYCERINE OR SILICON GREASE. MINERAL AND HYDROCARBON OIL-BASED GREASES CAN BE USED EXCEPT FOR ETHYLENE PROPYLENE GASKETS. LUBRICATION WITH LIQUID OILS IS NOT RECOMMENDED.

Only those parts itemised are supplied by John Crane Italia

All intellectual property rights (including but not limited to copyright and design rights whether registered or unregistered) in relation to this drawing together with the information contained in this drawing (including but not limited to know-how and confidential information) are proprietary to John Crane. Reproduction (whether in whole or in part) or use in any way whatsoever of this drawing or of any information contained therein is prohibited except with the prior written consent of John Crane. All rights in relation to this drawing are reserved.

PROJ.: 2522 - DUSLO CPAVOK 4 CLIENT: DUSLO A.S.
DUSLO CODE: 2260 / 16 / 15 / TPIT

MATERIAL REQUISITION No.
2522 000 MR | 0 | 9 | 5 | 0 | 0 | 0 | 1

ITEM: CARTR-XP-301 A/B_DE/NDE
SR Doc. CODE: A1101

TECHNIP ITALY S.p.A.

VENDOR DOCUMENT REVIEW

☐ 1 REVISE AND RESUBMIT

☐ 2 TO BE ISSUED AS FINAL PROVIDED COMMENTS ARE INCORPORATED

☒ 3 NO COMMENT - FINAL ISSUE

☐ 4 FOR INFORMATION ONLY

GN - Mar 01, 2016

DATE:

Ref.	Part No.	Drawing or Legacy Part No.	Description	Materials	Q.ty	Spares
1	87022185	0825/C44/509	MATING RING	SiC	1	XX
2	81062799	2430/123/394	O-RING	FFKM	1	X
3	87001494	0889/C41/530	PRIMARY RING	ANTIMONY IMPREGN. CARBON	1	XX
4	81062302	2380/123/394	O-RING	FFKM	1	X
5	81046636	A/4492	SPRING	ASTM B575 UNS N10276	12	XX
6	87007538	0889/D97/001	RETAINER	ASTM A276 UNS S31600	1	
7	87008335	0889/H86/001	THRUST RING	ASTM A167 UNS S31600	1	
8	81020704	0900/096/001	SNAP RING	ASTM A313 UNS S31600	1	XX
9	81263391	3695/305/001	SET SCREW	ASTM A193 UNS S31600	3	XX
10	89550854	H-3500-4532	SLEEVE	ASTM A276 UNS S31600	1	
11	81061990	2340/123/394	O-RING	FFKM	1	X
12	89745798	H-3250-4939	COVER	ASTM A276 UNS S31600	1	
13	81063711	3690/123/394	O-RING	FFKM	1	X
14	87200117	A/DB-1748-325-9055	FLOATING BUSH	CARBON	1	XX
15	81046438	A/3320	SPRING	ASTM A313 UNS S31600	3	XX
16	81062960	2450/123/394	O-RING	FFKM	1	X
17	89007596	A/H-3250-191-0550	AUXILIARY GLAND	ASTM A276 UNS S31600	1	
18	81043634	A/H-0000-228-0570	SPACER	SINTERED AISI 316L	4	XX
19	81775866	7916/300/001	SCREW	ASTM A193 UNS S31600	4	
20	87179699	I72390	DRIVE COLLAR	ASTM A276 UNS S31600	1	
21	81265234	2604/305/050	SET SCREW	ISO 898-5 CLASS 14.9	8	XX
22	81776387	0300/Q23/001	PLUG	ASTM A320 UNS S31600	3	
X	89577408		SET O-RINGS			
X+XX	89745796		REPAIR KIT			

THIS DRAWING IS RELEVANT
TO BOTH SIDES OF THE EQUIPMENT

SEAL DATA		API / ISO SEAL CODE			C2A1A3261	BSAIN	1CW-FL	PIPING PLAN	32/61
SEAL IDENTIFIER (INBOARD / OUTBOARD)					0889 / 48MP / X48 P147 1 X48 D81 H				
/ /									
CUSTOMER DATA		CUSTOMER			CONTRACTOR				
		Technip Italy (TPIT)			Technip Italy (TPIT)				
END USER		Duslo A.S.			EQUIPMENT TYPE				
					BB3 Centrifugal Pump				
SITE LOCATION		ŠAL'A - SLOVAK REPUBLIC			DEM				
					GE Nuovo Pignone				
PLANT		PROJECT DUSLO - ČPAVOK 4			MODEL / SIZE				
					8x13 MSND				
PLANT ITEM No.		010-XP-301 A/B			STUFFING BOX DRAWING No.				
					SOA38604/3				
SERVICE DATA		PROCESS FLUID NAME			Mdea Solution				
PROCESS TEMPERATURE		DENSITY / SG		VAPOUR PRESSURE		VISCOSITY			
°C		kg/dm³		MPa a		Pa s			
min									
norm		82		1.075		0.0014			
max									
min		115							
SUCTION PRESSURE		DISCHARGE PRESSURE		CHAMBER PRESSURE		SHAFT SPEED			
MPa a		MPa a		bar a		rpm			
min						4			
norm		3.98		0.75		9			
max						2985			

TITLE

MECHANICAL SEAL CARTRIDGE / 76.32 mm / 1648-2

SCALE

DATE

DRAWN

CHKD

APPD

DRG. LOCATION

DESIGN AUTH.

1:1

18/11/2015

DG

DG

MS

IT01EN

IT01EN

DRAWING No.

Sheet No.

ISSUE

GA-184273

1

B